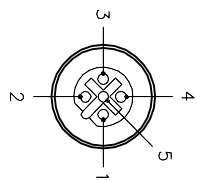
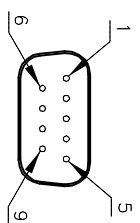


FEMALE END VIEW



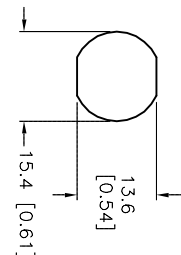
- 1 = N/C
- 2 = GREEN (BUS\_A)
- 3 = N/C
- 4 = RED (BUS\_B)
- 5 = BARE (SHIELD)

MALE END VIEW



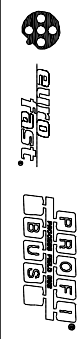
- 1 = N/C
- 2 = N/C
- 3 = BUS\_B (RED)
- 4 = N/C
- 5 = N/C
- 6 = N/C
- 7 = N/C
- 8 = BUS\_A (GREEN)
- 9 = N/C

TYPICAL PANEL CUTOUT

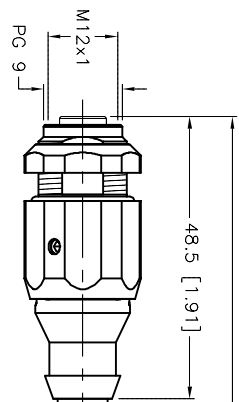
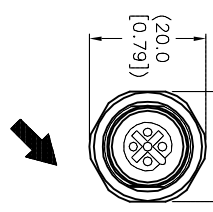


SPECIFICATIONS

CONTACT CARRIER MATERIAL	NYLON or TPU
MOLDED HEAD MATERIAL/COLOR	TPU/BLACK
CONTACT MATERIAL/PLATING	BRASS/GOLD
COUPLING NUT MATERIAL/PLATING	BRASS/NICKEL
OUTER JACKET MATERIAL/COLOR	PVC/MOLET
CONDUCTOR INSULATION MATERIAL	PE
NUMBER OF CONDUCTORS [AWG]	2x22 AWG (SHIELDED DATA PAIR WITH DRAIN WIRE)
DRAIN/SHIELD	22 AWG/ALUM. MYLAR PLUS TINNED COPPER BRAIDED
TEMPERATURE RANGE (D9S)	-25°C to 60°C (-13°F to +140°F)
PROTECTION CLASS	IP67, (IP20: D9S)
INCLUDES PROFIBUS TERMINATING RESISTOR	YES
MAX. PANEL THICKNESS	5.5mm [0.216"]



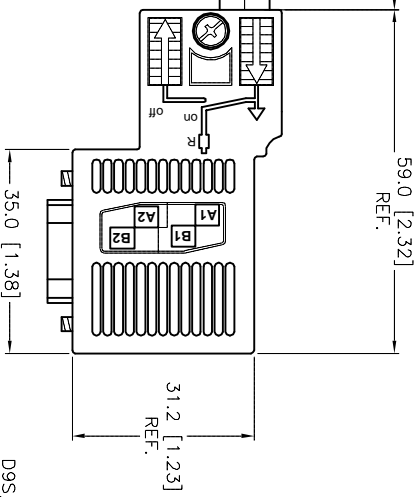
(19.0 [0.75])



\* METERS  
SEE NOTE 1

ø8.5 [0.33]

59.0 [2.32]  
REF.



D9S/T  
P1

SOURCE DRAWING - FOR REFERENCE ONLY

CABLE LENGTH	TOLERANCE*
ALL LENGTHS	+ 4% (OR 50mm) OF LENGTH - 0% (OR 0mm) OF LENGTH WHICHEVER IS GREATER
STRIP LENGTH	TOLERANCE*
0-7mm	±0.5mm
8-29mm	±1.0mm
30-49mm	±2.0mm
50-69mm	±3.0mm
70-100mm	±4.0mm
OVER 100mm	±5.0mm

NOTES:

1. "\*" INDICATES CABLE LENGTH IN METERS. CONTACT TURCK TO ORDER SPECIFIC LENGTHS.

RELATED DOCUMENTS

1.	
2.	
3.	
4.	

3RD ANGLE PROJECTION

ALL DIMENSIONS DISPLAYED ON THIS DRAWING ARE FOR REFERENCE ONLY

THIS DRAWING IS CONFIDENTIAL AND THE PROPERTY OF TURCK INC. USE OF THIS DOCUMENT WITHOUT WRITTEN PERMISSION IS PROHIBITED.

**TURCK inc**  
High Technology Sensors and Automation Controls

3000 CAMPUS DRIVE  
MINNEAPOLIS, MN 55441  
1-800-544-7769  
(763) 553-7300  
(763) 553-0708 fax  
turck.com

DESCRIPTION  
FKSDWE D9S/T 455-\*M

G	UPDATE J1 HOUSING	RDS	06/24/14	46037					
REV	DESCRIPTION	BY	DATE	ECO NO.					

UNIT OF MEASUREMENT  
**MILLIMETER [ INCH ]**

DO NOT SCALE THIS DRAWING

IDENTIFICATION NO.

REV  
G

SHEET 1 OF 1